



Designing Out Crime and Creating Safe Spaces

September 18, 2020

Tamara D. Herold, Ph.D.
University of Nevada, Las Vegas

Webinar Tips



To ask a question to presenters, enter your question in the chat box and hit enter.

A screenshot of a webinar interface. The main area displays a slide with the title 'Objective' and three bullet points. The chat box at the bottom left contains a list of files. A blue callout bubble points to the chat box.

Objective

- Help your task force brainstorm potential partnerships with state that may boost task force efforts
- Equip your task force with ideas maintain partnerships
- Highlight effective collaborative increase the identification of human and traffickers

Serving the Leaders of Today, Developing

Name	Size
104 Q. docx	114 KB
107 P. docx	548 KB
108 P. docx	3.5 MB
109 P. docx	1 MB
110 P. docx	223 KB

Chat Room: [unread]

104 Q. docx: [unread]

107 P. docx: [unread]

108 P. docx: [unread]

109 P. docx: [unread]

110 P. docx: [unread]

Display



Webinar Tips (continued)

- For technical support, send a chat message to “Tech Support.”
- For the best quality, close other browser windows and tabs during the webinar.
- If you click on the icon of the speaker at the top of the screen, you can adjust your speaker volume.
- This webinar is being recorded. A link will be emailed to you following weeks.
- At the end of the webinar, there will be an opportunity to evaluate the presentation by answering the poll questions.



Tamara D. Herold, Ph.D.
Associate Professor, Graduate Director
Department of Criminal Justice
University of Nevada, Las Vegas

We shape our buildings;
thereafter they shape us.

~ Winston Churchill

Audience Poll



Have you ever personally conducted a formal CPTED audit of a problem location?

Greenspun Hall


University of Nevada, Las Vegas





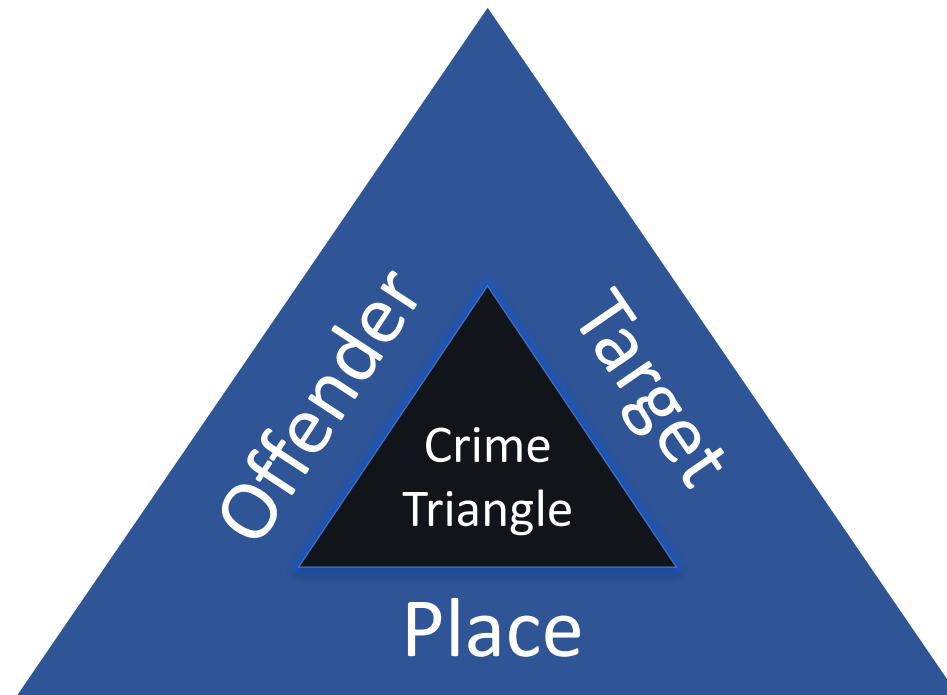
Our Webinar Objectives:

1. Explain how the built environment and place management practices can create crime opportunities
2. Describe common conditions of criminogenic places
3. Provide examples of techniques used to reduce crime at risky places
4. Offer resources to help sites conduct place assessments and design place-based interventions



How the built
environment and
place management
practices can create
crime opportunities

Why here?



Audience Poll

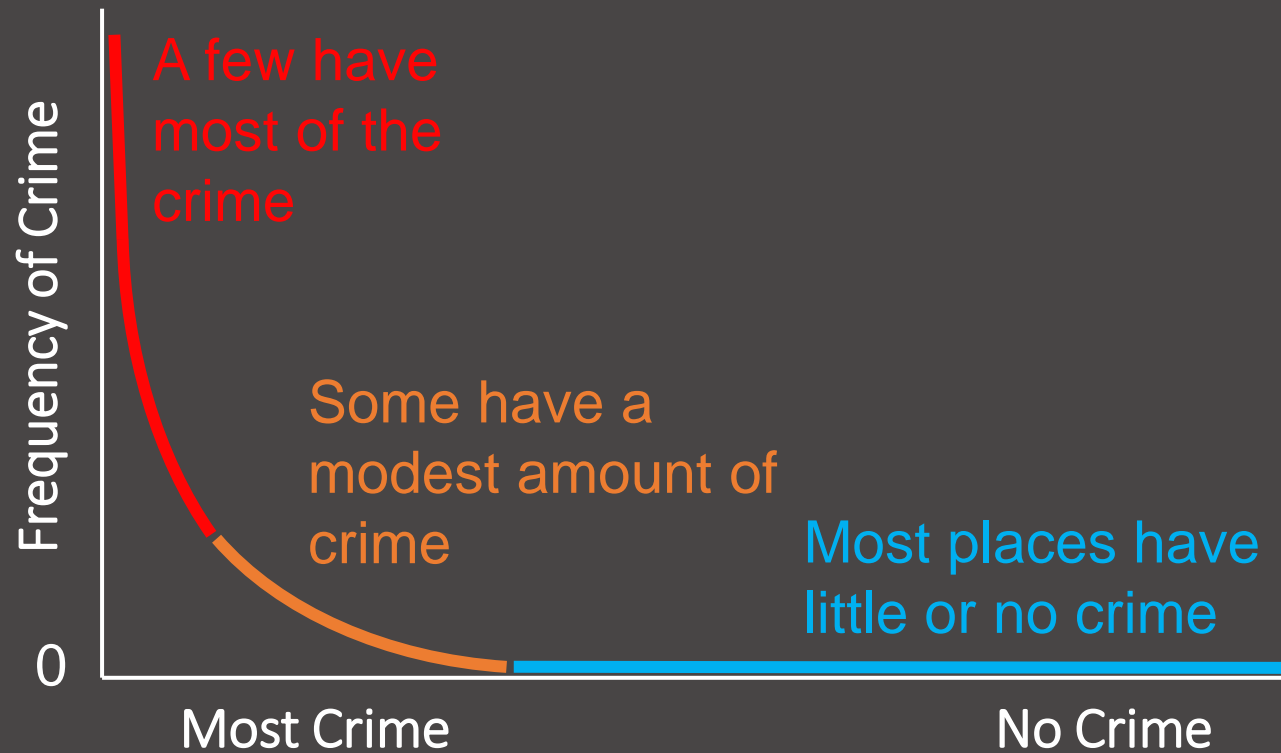


Do you believe that there are individual places driving overall crime in your target area, or do you believe that this is a larger neighborhood-level problem?

Risky
Facilities

80-20 Rule

Proprietary Crime Places



It's the place: Place Management

1

Organize
space

2

Regulate
conduct

3

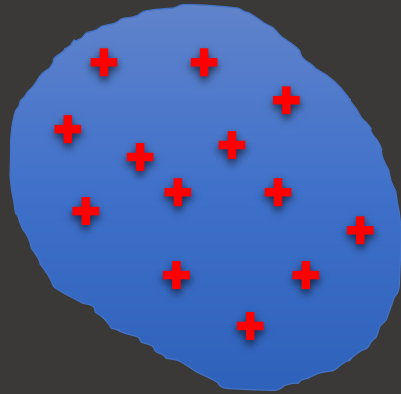
Control
access

4

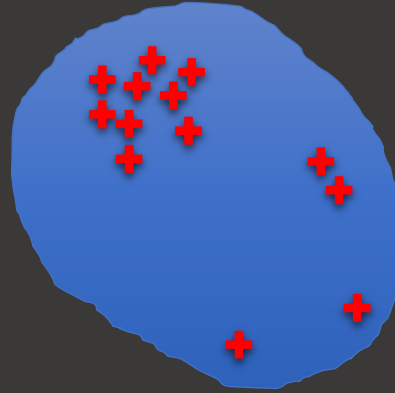
Acquire
resources

All can be practiced in a way that promotes crime

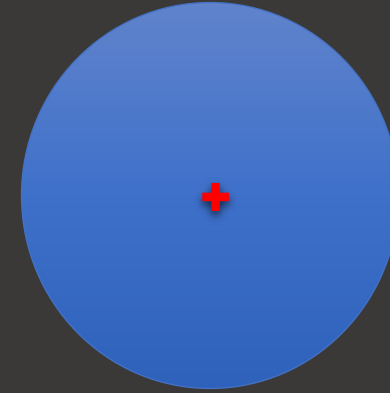
It's the environment: Proximal Crime Places



Dispersed

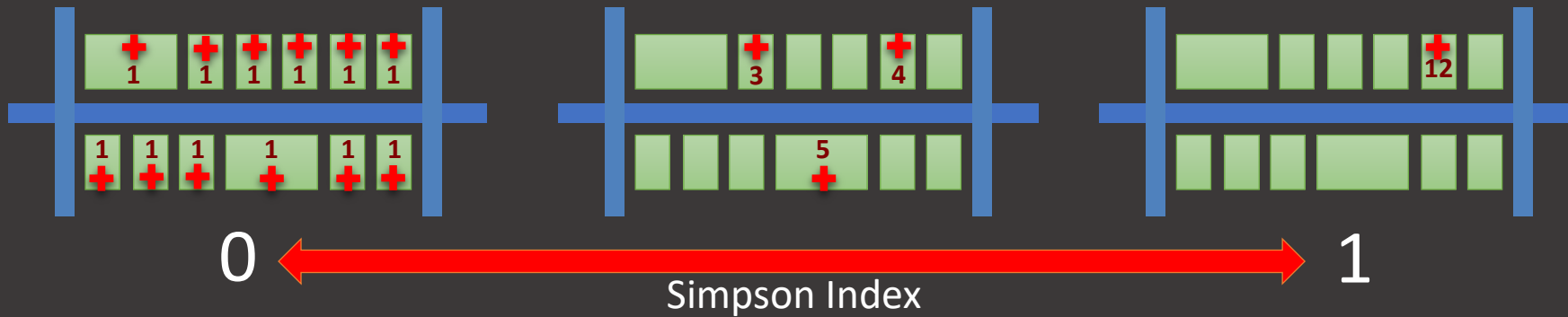


Clustered



Hotpoint

Ratcliffe, 2004



12 crimes along a street segment

A dark blue, irregularly shaped graphic with a splatter effect, containing white text. The graphic is centered on a white background and has a rough, ink-like border. The text is written in a clean, white, sans-serif font.

Common conditions
of criminogenic places

CPTED

The Death and Life of Great American Cities

Defensible Space



C. Ray Jeffery



Jane Jacobs



Oscar Newman



Inspiration for Defensible Space

2,740-unit public housing project – 11 stories – St. Louis – 1960s

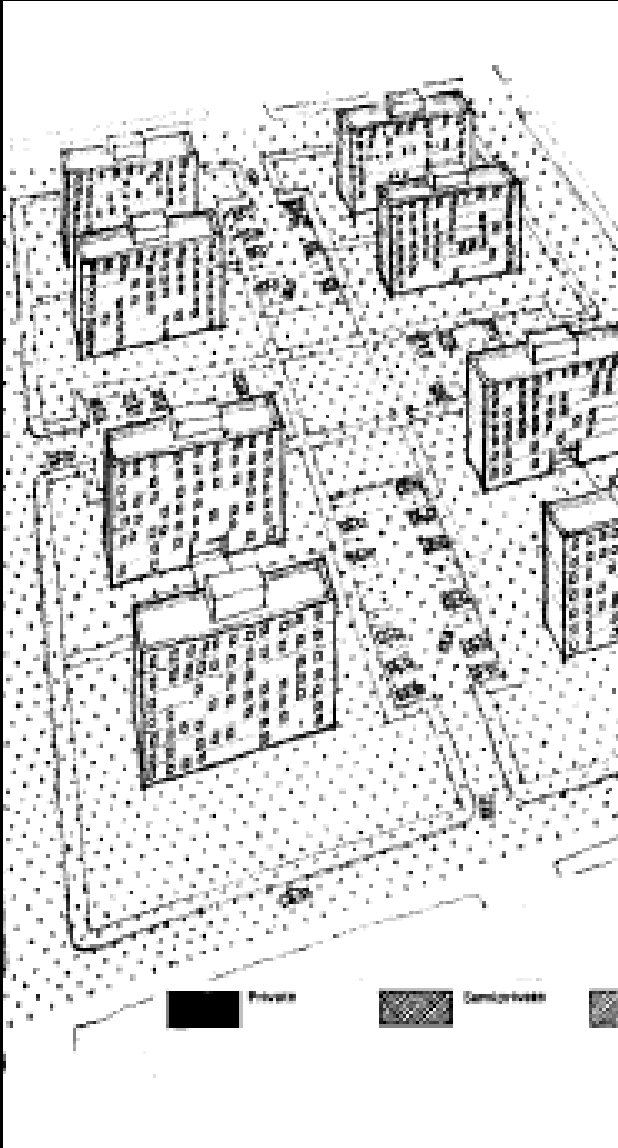


Sewage flooding
frozen outside of
broken windows



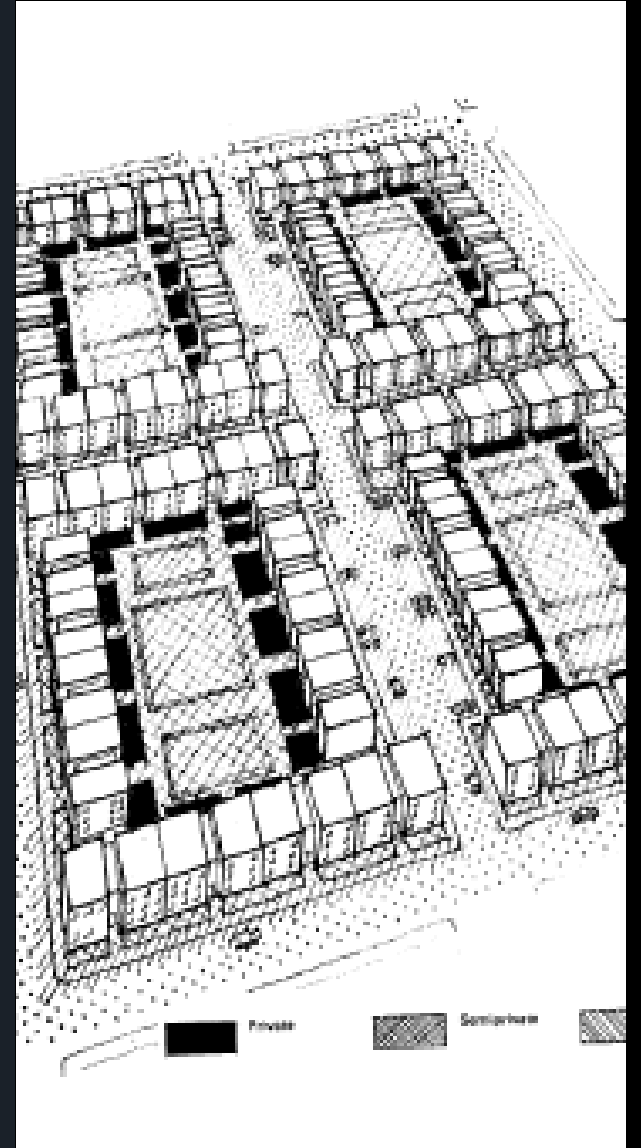
Torn down at a loss
of \$300 million

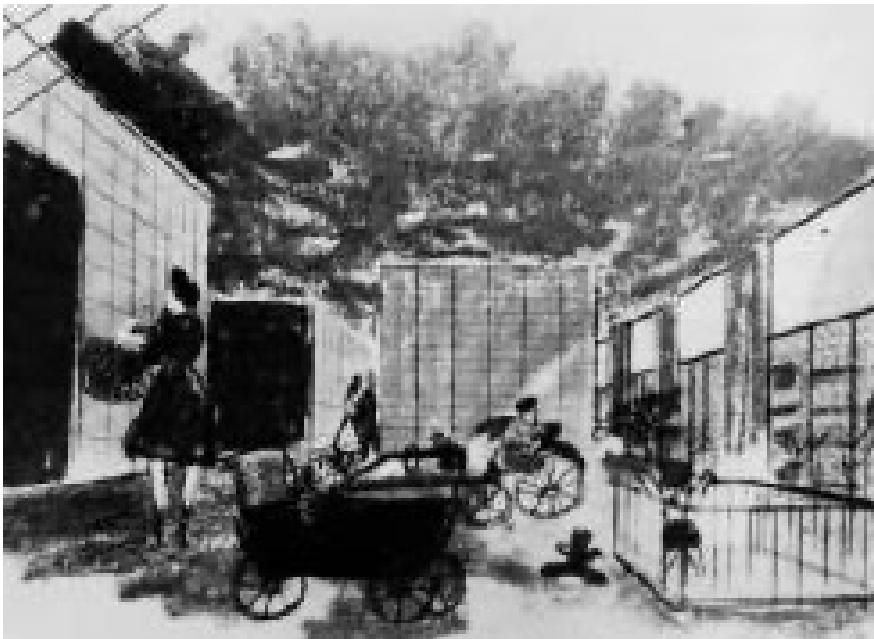




Territoriality

Lack of demarcation or subdivision of buildings and grounds into “zones of influence”





Surveillance

Buildings designed without creating opportunities to observe common areas



Image

Design stands out
from rest of
community
(stigmatization)



Location

Placement in relation to other land use (around other risky places)



Access Control

Little to no regulation of who can enter or use the space






Target Hardening

Easily accessible targets

Audience Poll



Think of the number one crime/victimization location in your CBCR area. What does this location need most?
(Select two)

The image features a central, dark blue, irregularly shaped graphic that resembles a splatter or a brushstroke. This graphic is set against a white background that is also covered in a light, greyish-blue splatter pattern. The text is centered within the dark blue area.

Techniques used to
reduce crime at
risky places



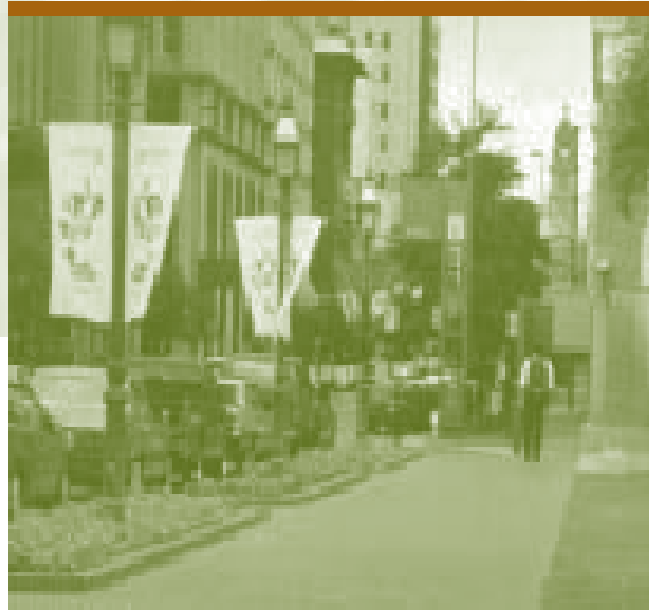
Physical Design

1st Generation CPTED

Territorial Reinforcement (Promotes a Sense of Ownership)



Fencing and landscaping material have been located along property lines which formally designate public and semi-public space as well as showing ownership, natural surveillance and access control.



The maintenance, landscaping, and decorative flags shown on this downtown street indicate ownership and pride.

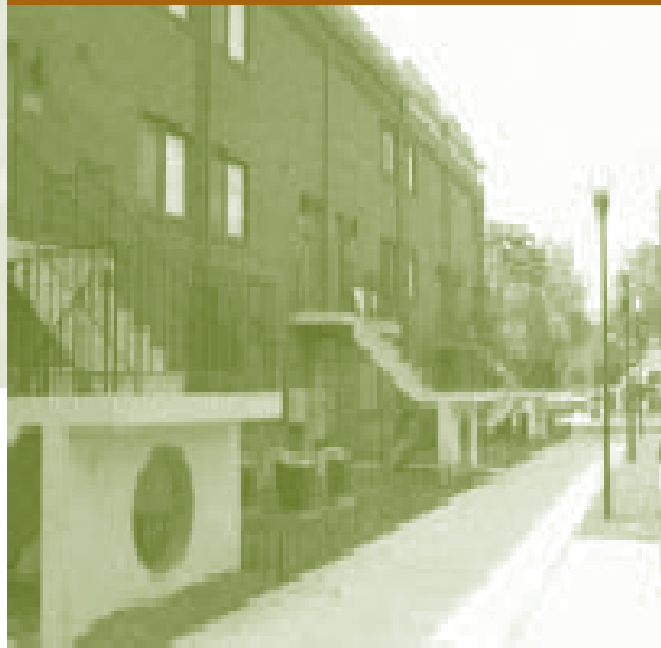


Landscaping screens the parking lot from the roadway and identifies public and semi-public space while allowing for natural surveillance into the site.

Surveillance (Increases Visibility and Risks of Detection)



Designers of this garage have reduced areas to hide by opening up walls that are typically solid. Surveillance opportunities are created throughout and it feels more open.

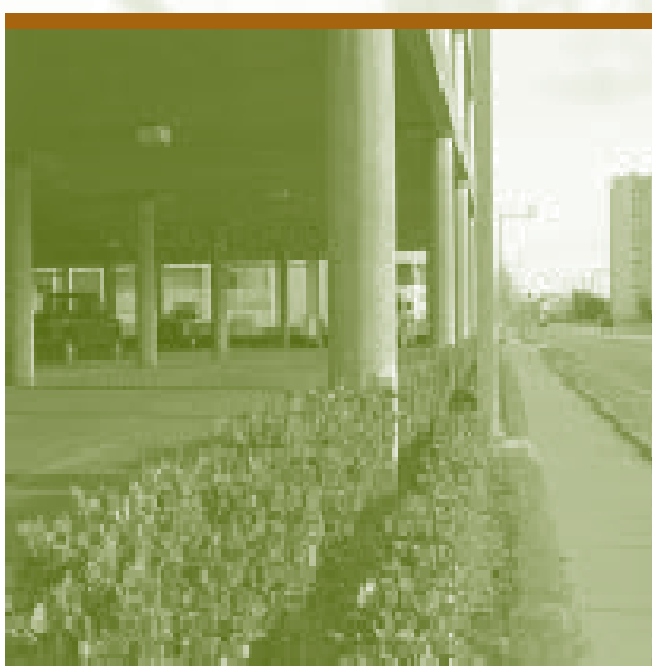


The rear entrance into these apartment units has created natural surveillance opportunities to and from the walkway and street while showing territoriality.



The main entrance of this school is located adjacent to the principal's office and the design provides surveillance opportunities. This design is key for all business and office environments.

Access Control (Discourage Unauthorized or Unwanted Entry)



Landscape material is used to control access into a parking deck, while also reinforcing territoriality and providing natural surveillance from the street and sidewalk.



Fencing along the units' patio area helps to control access, as well as provide a sense of ownership. The fencing material also allows for visibility to and from the area.



This is an example of access control that doesn't eliminate natural surveillance opportunities and is easy to maintain.

Beautification (Reduce Stigmatization)



BEFORE



AFTER

Audience Poll

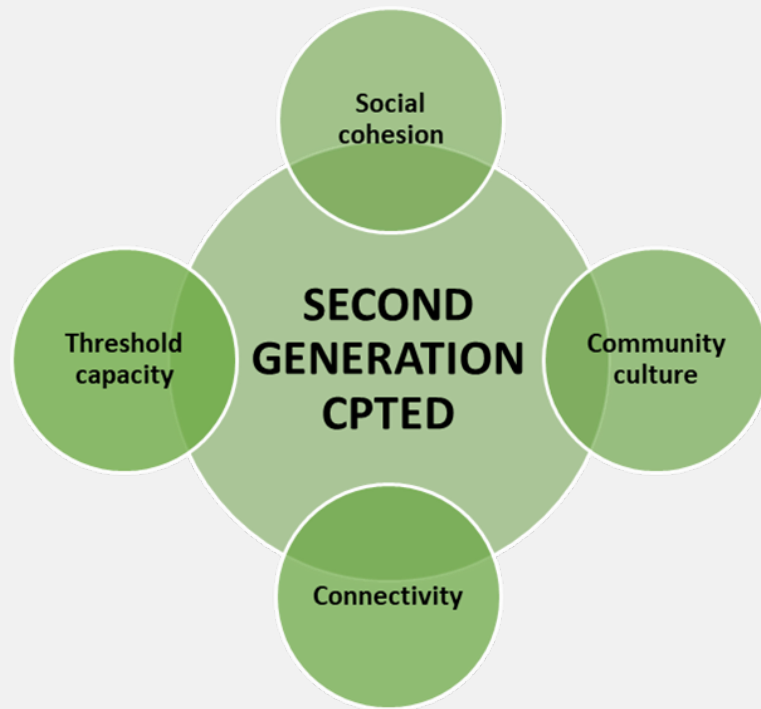


Does your CBCR action plan include 1st Generation CPTED principles to design out crime?



Community Building

2nd Generation CPTED



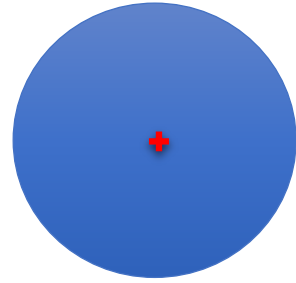
- **Social Cohesion** – action plans that allow neighbors to tackle problems together
- **Community Culture** – placemaking activities (e.g., cultural events) to promote bonds
- **Connectivity** – build physical and social links to surrounding neighborhoods and local government resources
- **Threshold Capacity** – diverse land use to promote neighborhood activity and discourage single land-use concentrations

Audience Poll



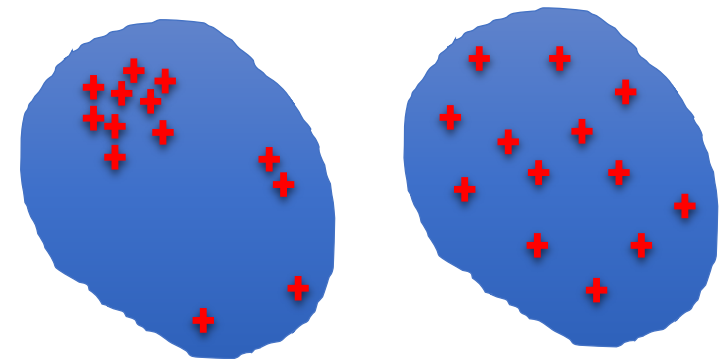
Does your CBCR action plan include 2nd Generation CPTED recommendations to build community resiliency?

1st Generation
It's the place



Main take-away

2nd Generation
It's the environment



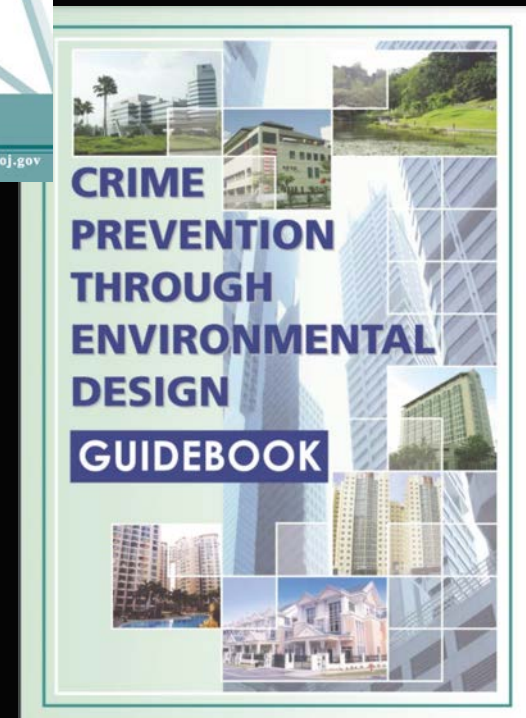
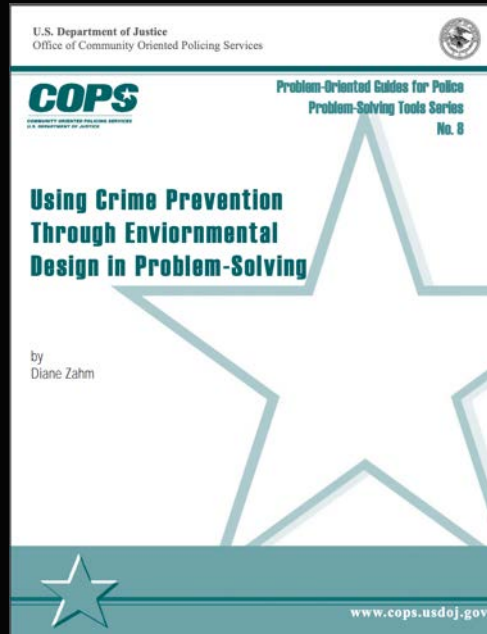
Careful analysis of local
context reveals both

How places are designed AND used



Resources

Guidebooks



Is Your Family Living In The Safest Place Possible?

The Las Vegas Metropolitan Police Department strongly supports the Crime Free Multi-Housing Program. Properties that have taken steps to reduce crime participate in this program. Requirements for this certification include:

- Manager must attend an 8 hour training session instructed by LVMPD
- Criminal background checks are performed on all residents
- The apartment community must pass a property safety inspection by an LVMPD Crime Prevention Specialist
- A crime and drug free contract is signed by every resident



CRIME FREE MULTI-HOUSING



Sheriff Doug Gillespie of the Las Vegas Metropolitan Police Department would like to thank the following apartment communities for their completion of the Crime Free Multi-Housing Program and dedication to the Las Vegas Community

Participating Apartment Communities

North

- Arville Park Apartments
- Camden Hills Apartments
- Cameron Apartments
- Casa Del Sol Apartments
- Clark Tower Condo Apartments
- Greenville Park Apartments
- Lake Tonopah Senior Apartments
- Pine Village Apartments
- Portola Del Sol Apartments
- San Michele Apartments
- Stella Fleming Tower Apartments
- Tara Vista Apartments
- The Teddy Apartments
- Villas at Painted Desert Apts

Downtown

- Baltimore Garden Apartments
- Charleston Plaza Apartments
- Fremont St. Apartments
- Fremont Villa Apartments
- Lake Cottage Apartments
- Lake Residency Apartments
- Oak Tree Apartments
- Oasis Ridge Apartments
- Ogden Pine Apartments
- Park Avenue Apartments
- Spectrum Village Apartments
- Stewart Pines Apts
- Bonita Terrace Apts

Northwest

Northwest

- Northpointe Apartments
- The Mariner at South Shores
- Oasis Palms
- Estancia Apts

South Central

- Flamingo Arms Apartments
- Hazelwood Villa Apartments
- Augusta Apts
- Coliseum Villas Apts 455 Twain Ave
- Katie Arms Apartments
- Pine Park Apts
- South Valley Apts
- Parkway at Silverado Ranch

West

- Canyon Club Apartments
- Flamingo Polo Club Apts.
- Harmony Square Apartments
- Nottingham Garden Apts
- Rancho Alvarado Apts
- Boulder palms Senior Community
- Mountain Vista Apts

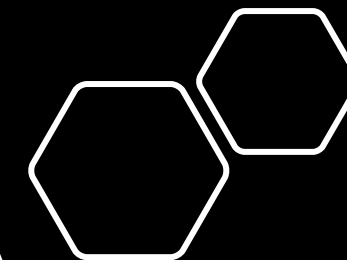
Southwest

- Buffalo Highlands IX Apts.
- Polo Club Apartments
- Redwood Garden Apartments
- Spring Valley Highland IV & V Apartments
- The Palms at Peccole Ranch Apartments
- Apache Plaza

Case Studies



Increase the Effort	Increase the Risks	Reduce the Rewards	Reduce Provocations	Remove Excuses
Harden targets <ul style="list-style-type: none"> Steering column locks and immobilisers Anti-robbery screens Tamper-proof packaging 	Extend guardianship <ul style="list-style-type: none"> Take routine precautions: go out in group at night, leave signs of occupancy, carry phone "Cocoon" neighborhood watch 	Conceal targets <ul style="list-style-type: none"> Off-street parking Gender-neutral phone directories Unmarked bullion trucks 	Reduce frustrations and stress <ul style="list-style-type: none"> Efficient queues and polite service Expanded seating Soothing music/muted lights 	Set rules <ul style="list-style-type: none"> Rental agreements Harassment codes Hotel registration
Control access to facilities <ul style="list-style-type: none"> Entry phones Electronic card access Baggage screening 	Assist natural surveillance <ul style="list-style-type: none"> Improved street lighting Defensible space design Support whistleblowers 	Remove targets <ul style="list-style-type: none"> Removable car radio Women's refuges Pre-paid cards for pay phones 	Avoid disputes <ul style="list-style-type: none"> Separate enclosures for rival soccer fans Reduce crowding in pubs Fixed cab fares 	Post instructions <ul style="list-style-type: none"> "No Parking" "Private Property" "Extinguish camp fires"
Screen exits <ul style="list-style-type: none"> Ticket needed for exit Export documents Electronic merchandise tags 	Reduce anonymity <ul style="list-style-type: none"> Taxi driver IDs "How's my driving?" decals School uniforms 	Identify property <ul style="list-style-type: none"> Property marking Vehicle licensing and parts marking Cattle branding 	Reduce emotional arousal <ul style="list-style-type: none"> Controls on violent pornography Enforce good behavior on soccer field Prohibit racial slurs 	Alert conscience <ul style="list-style-type: none"> Roadside speed display boards Signatures for customs declarations "Shoplifting is stealing"
Deflect offenders <ul style="list-style-type: none"> Street closures Separate bathrooms for women Disperse pubs 	Utilize place managers <ul style="list-style-type: none"> CCTV for double-deck buses Two clerks for convenience stores Reward vigilance 	Disrupt markets <ul style="list-style-type: none"> Monitor pawn shops Controls on classified ads License street vendors 	Neutralize peer pressure <ul style="list-style-type: none"> "Idiots drink and drive" "It's OK to say No" Disperse troublemakers at school 	Assist compliance <ul style="list-style-type: none"> Easy library checkout Public lavatories Litter bins
Control tools/weapons <ul style="list-style-type: none"> "Smart" guns Disabling stolen cell phones Restrict spray paint sales to juveniles 	Strengthen formal surveillance <ul style="list-style-type: none"> Red light cameras Burglar alarms Security guards 	Deny benefits <ul style="list-style-type: none"> Ink merchandise tags Graffiti cleaning Speed humps 	Discourage imitation <ul style="list-style-type: none"> Rapid repair of vandalism V-chips in TVs Censor details of modus operandi 	Control drugs and alcohol <ul style="list-style-type: none"> Breathalyzers in pubs Server intervention Alcohol-free events



Tools & Checklists

25 Techniques of Situational Crime Prevention

CBCR RESOURCE LIBRARY

The CBCR Resource Library is where community members can find relevant resources, informative webinars, and valuable trainings on several topics related to CBCR site goals and objectives.

- Community Based Crime Reduction
 - CBCR Bulletins
 - CBCR Sites
 - Communications
 - Community-Law Enforcement Relations
 - Community-Oriented
 - Crime Mapping
 - Crime Prevention Through Environmental Design**
 - Data Analysis
 - IACP/CBCR Webinars
 - Miscellaneous



Questions?